

# MHS HIRE RANGE



**FILTRATION RANGE**



**FLUSHING RIG**



**DIAGNOSTICS RANGE**



**Mining & Hydraulic  
Supplies**



**WESTERN AUSTRALIAN  
OWNED**

**FILTRATION RANGE**

4-13

**FLUSHING RIG**

12-12

**DIAGNOSTICS RANGE**

14-19

**80%** OF ALL OIL RELATED FAILURES ARE CAUSED BY OIL CONTAMINATION.

Mining and Hydraulic Supplies (MHS) provides specialised equipment, including filtration systems, flushing rigs, and diagnostic tools. Their rental options are flexible, catering to daily, weekly, monthly, or long-term needs of contractors.

**FILTRATION RANGE**

Our MHS Filtration Range is designed to effectively remove contaminants, ensuring clean and dry hydrocarbons. With advanced filtration technology, our products provide reliable protection across various applications, maintaining the highest standards of purity and performance.

**FLUSHING RIG**

Our MHS Flushing Range is specifically engineered to purify oil lines, ensuring clean and efficient operation. Utilizing advanced flushing technology, our products remove contaminants and maintain the integrity of your system.

**DIAGNOSTICS RANGE**

Our MHS Diagnostics Range enables efficient on-site testing of new and in-service hydrocarbons. Designed for accuracy and convenience, our diagnostic tools help you monitor oil quality, detect potential issues early, and ensure optimal performance of your equipment.



Pg.7

HDU 15/25



Pg.7

HDU 27/27



Pg.8

HDU 27/54



Pg.8

HDU 27/54 WITH OCM



Pg.9

HDU 427/54



Pg.9

HDU 427/108



Pg.10

PTU 27/54



Pg.10

PTU3 27/108



Pg.11

PTU3 2 X 27/108



Pg.12

DESORBER D10 COMBI



Pg.12

DESORBER 40



Pg.13

VRU 27/108



Pg.13

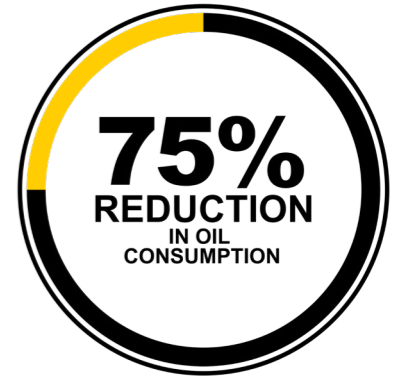
MOBILE FLUSHING UNIT



### CONTAMINATED OIL?

Contamination sources such as particles, water, oxidation, acidity & varnish can significantly damage an oil system. CJC® solutions remove critical contaminants in one and the same process.

Using a CJC offline oil filtration system expect up to:



### CJC FINE FILTERS

HDU

Particles Condensation



Free Water



Dissolved Water



Insoluble & Soluble Oxidation



Varnish



### CJC FINE SEPARATORS

PTU

Free Water & Particles



Particles



Dissolved Water



Insoluble & Soluble Oxidation



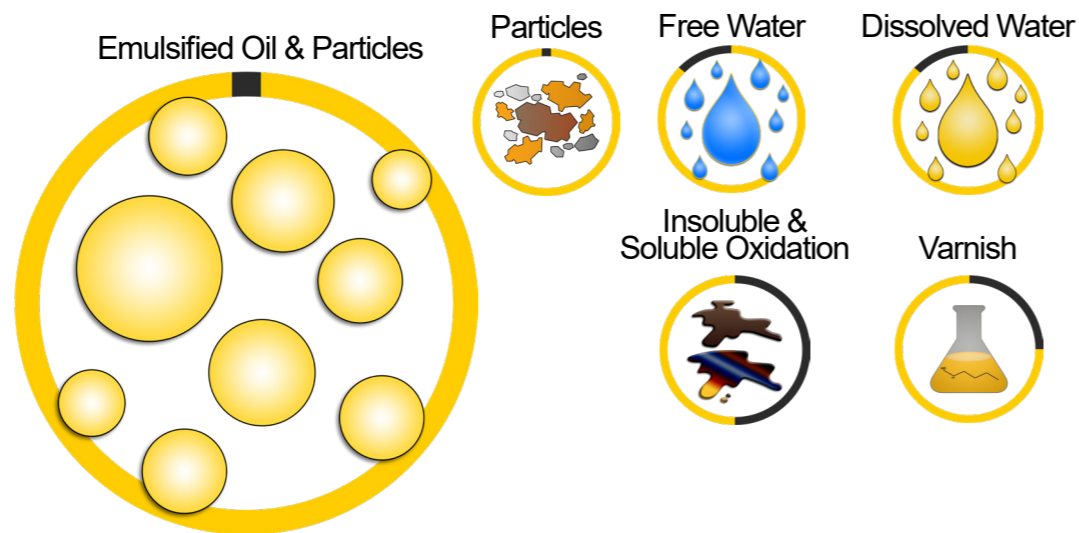
Varnish





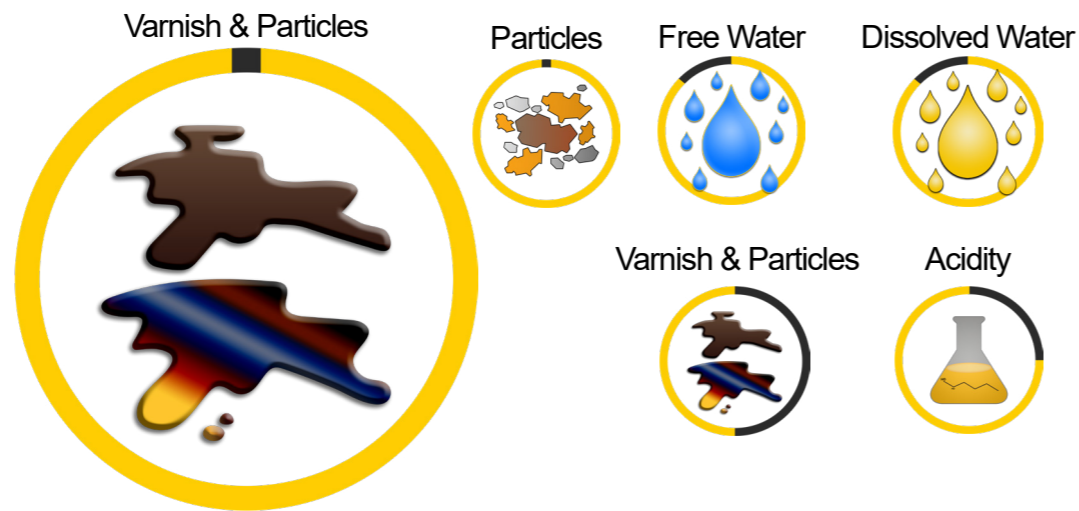
### CJC DESORBER/FILTERS

Desorber/Filter Combi



### CJC VARNISH REMOVAL UNIT

Varnish Removal



### HDU 15/25



#### SPECS

Dirt Holding Capacity:  
Up to 1.5 kg

#### SYSTEM

System fit:  
Up to 1,000L - Depending on oil spec and temp

Pump range:  
PV2-18-4 (120L/hr)

#### Power supply:

- Motor: 240V, 0.18kw, 4 pole
- Plug Detail: 10 Amp Single Phase

#### APPLICATIONS (NEW / IN-SERVICE)

- Hydraulic oil
- Gear oil
- Diesel fuel

#### PRODUCT DETAILS:

Hire Period:	Weekly
Weight:	40 kg
Dimensions (cm):	500L x 400W x 1230H

### HDU 27/27

#### SPECS

Dirt Holding Capacity:  
Up to 6 kg

#### SYSTEM

System fit:  
Up to 2,500L - Depending on oil spec and temp

Pump range:  
MZ9, (374L/hr)

#### Power supply:

- Motor: 240v, 1Ph, 6 pole
- Plug Detail: 10 Amp Single Phase

#### APPLICATIONS (NEW / IN-SERVICE)

- Hydraulic oil
- Gear oil
- Diesel fuel



#### PRODUCT DETAILS:

Hire Period:	Weekly
Weight:	75 kg
Dimensions (cm):	820L x 490W x 1140H





### HDU 27/54



#### SPECS

Dirt Holding Capacity:  
Up to 12 kg

#### SYSTEM

System fit:  
Up to 3,000L - Depending on oil spec and temp

Pump range:  
P19 (600L/hr)

#### Power supply:

- Motor: 415V, 0.37kW, 4 pole
- Plug Detail: 32 Amp 3 phase

#### APPLICATIONS (NEW / IN-SERVICE)

- Hydraulic oil
- Gear oil
- Diesel fuel

#### PRODUCT DETAILS:

Hire Period:	Weekly
Weight:	95 kg
Dimensions (cm):	1200L x 650W x 1100H

### HDU 27/54 WITH OIL CONTAMINATION MONITOR

#### SPECS

Dirt Holding Capacity:  
Up to 12 kg

#### SYSTEM

System fit:  
Up to 3,000L - Depending on oil spec and temp

Pump range:  
MZ11 (425L/hr)

#### Power supply:

- Motor: 415V, 3Ph, 6 pole
- Plug Detail: 32 Amp 5 pin 3 phase

#### CONTAMINATION MONITORING

- OCM 15

#### APPLICATIONS (NEW / IN-SERVICE)

- Hydraulic oil
- Gear oil
- Diesel fuel



#### PRODUCT DETAILS:

Hire Period:	Weekly
Weight:	95 kg
Dimensions (cm):	1160L x 730W x 1040H



### HDU 427/108

#### SPECS

Dirt Holding Capacity:  
Up to 96 kg

#### SYSTEM

System fit:  
Up to 10,000L - Depending on oil spec and temp

Pump range:  
MZ28 (1100L/hr)

#### Power supply:

- Motor: 415V, 3Ph, 6 pole
- Plug Detail: 32 Amp 4 pin 3 phase

#### APPLICATIONS (NEW / IN-SERVICE)

- Hydraulic oil
- Gear oil
- Diesel fuel
- Crushers
- Fixed plant



#### PRODUCT DETAILS:

Hire Period:	Weekly
Weight:	500 kg
Dimensions (cm):	1200L x 1200W x 1800H

### HDU 427/54

#### SPECS

Dirt Holding Capacity:  
Up to 48 kg

#### SYSTEM

System fit:  
Up to 8,000L - Depending on oil spec and temp

Pump range:  
MZ21 (1260L/hr)

#### Power supply:

- Motor: 415V, 0.55kw, 3Ph, 4 pole
- Plug Detail: 32 Amp 4 pin 3 phase

#### APPLICATIONS (NEW / IN-SERVICE)

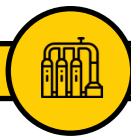
- Application:
- Hydraulic oil
  - Gear oil
  - Diesel fuel
  - Crushers
  - Fixed plant



#### PRODUCT DETAILS: (NEW / IN-SERVICE)

Hire Period:	Weekly
Weight:	500 kg
Dimensions (cm):	1200L x 1200W x 1230H





**PTU 27/54**



**SPECS**

**Dirt Holding Capacity:**  
Up to 12 kg

**SYSTEM**

**System fit:**  
Up to 3,000L - Depending on oil spec and temp

**Pump range:**  
MZ16 (630L/hr)

**Power supply:**

- **Motor:** 415 V, 3ph , 6 pole
- **Plug Detail:** 32 Amp 4 pin 3 phase

**APPLICATIONS (NEW / IN-SERVICE)**

- Hydraulic oil
- Gear oil
- Diesel fuel
- Crushers
- Fixed plant

**PRODUCT DETAILS:**

Hire Period:	Weekly
Weight:	120 kg
Dimensions (cm):	1100L x 650W x 1700H

**PTU3 27/108**

**SPECS**

**Dirt Holding Capacity:**  
Up to 24 kg

**SYSTEM**

**System fit:**  
Up to 6,000 L - Depending on oil spec and temp

**Pump range:**  
MZ21 (1260L/hr)

**Power supply:**

- **Motor:** 415V, 3Ph, 4 pole
- **Plug Detail:** 32 Amp 4 pin 3 Phase

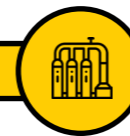
**APPLICATIONS (NEW / IN-SERVICE)**

- Hydraulic oil
- Gear oil
- Diesel fuel
- Crushers
- Fixed plant



**PRODUCT DETAILS:**

Hire Period:	Weekly
Weight:	225 kg
Dimensions (cm):	1100L x 1100W x 2050H



**PTU3 2 X 27/108**

**SPECS**

**Dirt Holding Capacity:**  
Up to 48 kg

**SYSTEM**

**System fit:**  
Up to 10,000 L - Depending on oil spec and temp

**Pump range:**  
GP33-6 (1790L/hr)

**Power supply:**

- **Motor:** 415V, 3Ph, 6 Pole
- **Plug Detail:** 32 Amp 4 pin 3 Phase

**APPLICATIONS**

- Hydraulic oil
- Gear oil
- Diesel fuel
- Crushers
- Fixed plant



**PRODUCT DETAILS:**

Hire Period:	Weekly
Weight:	210 kg
Dimensions (cm):	1450L x 800W x 2050H





### FLUSHING RIG



#### SPECS

- 1500L Tank
- 100-1000LPM VVVF Control
- 550 bar High Pressure Piston Pump (no onsite air requirements)
- Inbuilt Oil Transfer Unit
- Crane and Forklift Compatible
- Power requirements: 415V, 120A

The MHS Flushing and Pressure Testing Rig is a bundled all-in-one solution which can deliver flow up to 1000LPM, and pressures of 550 bar. An on board particle counter will sample, test and log cleanliness levels in real-time.

Our experienced technicians can accompany the rig to carry out the flushing and testing procedures.



### D10 COMBI



#### SPECS

**Dirt Holding Capacity:**  
6 kg

#### SYSTEM

**System fit:**  
Up to 2,500 L  
Viscosity: 32 to 150 cSt

**Pump range:**  
PV2-7-4 (45L/hr)

#### Power supply:

- **Motor:** 240V, 1Ph, 4 pole
- **Plug Detail:** 15 Amp Single Phase

#### APPLICATIONS

- Hydraulic oil
- Gear oil
- Stern drives
- Thrusters
- Fixed plant

#### PRODUCT DETAILS:

<b>Hire Period:</b>	Weekly
<b>Weight:</b>	170 kg
<b>Dimensions (cm):</b>	700L x 700W x 1800H

### D40 DISORBER

#### SPECS

**Emulsified:**  
8L/hr Water removal

#### SYSTEM

**System fit:**  
Up to 25,000 L

**Pump range:**  
GP26-4 (1520L/hr)

#### Power supply:

- **Motor:** 415V, 3Ph, 4 pole
- **Plug Detail:** Wilko Series 63 Amp 5 pin

#### APPLICATIONS (NEW / IN-SERVICE)

- Hydraulic oil
- Gear oil
- Stern drives
- Fixed plant



#### PRODUCT DETAILS:

<b>Hire Period:</b>	Weekly
<b>Weight:</b>	1300 kg
<b>Dimensions (cm):</b>	2400H x 1500L x 1500W





### VRU 27/108



#### CONTAMINATION SOURCES

Varnish / Dirt Holding Capacity:  
Up to 24 kg

#### SYSTEM

System fit:  
15,000 - 45,000 L  
Max 68 CST

Pump range:  
PV4-7 (45L/hr)

#### Power supply:

- **Motor:** 400V, 3Ph, 4 pole
- **Plug Detail:** 20 Amp 5 pin 3 Phase

#### APPLICATIONS (NEW / IN-SERVICE)

- Hydraulics
- Steam and gas turbines and compressors

#### PRODUCT DETAILS:

Hire Period:	Weekly
Weight:	450 kg
Dimensions (cm):	1700W x 750D x 1720H

### MOBILE FLUSHING UNIT

#### SPECS

Dirt Holding Capacity:  
Up to 24 kg

#### SYSTEM

System fit:  
Up to 1,000L

Pump range:  
GP26-8 (700L/hr)

#### Power supply:

- **Motor:** 415V, 0.55kw, 3Ph, 8 pole
- **Plug Detail:** 32 Amp 4 pin 3 Phase



#### PRODUCT DETAILS:

Hire Period:	Weekly
Weight:	470 kg
Dimensions (cm):	1370L x 1370W x 1690H

#### CONTAMINATION MONITORING

- OCM 15

#### APPLICATIONS (NEW / IN-SERVICE)

- Hydraulic oil
- Gear oil
- Mobile final drives



### CONDITION MONITORING - MOBILE EQUIPMENT

#### Enhanced Reliability:

Our optical particle counters are engineered for precise, consistent monitoring in mobile environments, unaffected by vibrations. This ensures reliable data to support critical heavy machinery operations.

#### Advanced Sensor Technology:

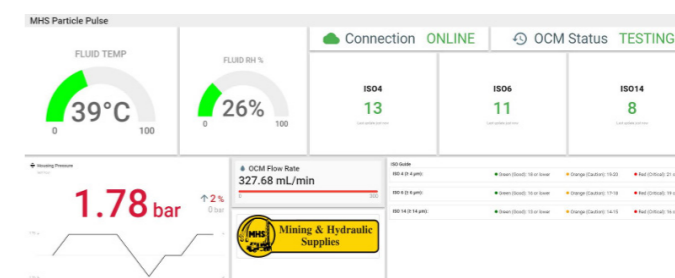
- **Bubble Elimination:** Advanced digital imaging technology accurately distinguishes between air bubbles and actual contaminants, ensuring precise particle counts.
- **Root Cause Analysis:** Particles are classified by type (e.g., fatigue wear, sliding wear, cutting wear) through sophisticated shape recognition, enabling detailed root cause analysis to identify contamination sources.
- **Comprehensive Oil Health Monitoring:** Integrated sensors assess water content, particulate levels, and overall oil degradation, providing a complete picture of oil condition and enabling data-driven maintenance decisions.
- **Real-Time, On-Site Monitoring:** A user-friendly interface provides instant visual indicators and data logging, allowing for the continuous tracking of oil cleanliness, with alerts for any potential issues.
- **Versatility:** Our counters are compatible with a wide range of oils, including high-viscosity fluids, making them ideal for various mobile equipment and machinery applications.

#### Key Benefits:

- Reduced Downtime
- Extended Equipment Lifespan
- Cost-Effective Maintenance



#### Online Monitoring Platform





## CONDITION MONITORING - MOBILE EQUIPMENT

### Monitoring Platform:

#### Access Anywhere:

- Our custom monitoring platform offers remote access via a mobile app or browser, allowing users to view data, generate reports, and monitor trends in real time. The platform supports both desktop and mobile devices, ensuring you can monitor and manage cleanliness data from anywhere.

#### Real-Time Data Visualisation:

- The platform provides real-time visualization of key metrics, including ISO cleanliness codes, particle counts, and oil condition status. Intuitive dashboards present data in graphical form, allowing for easy trend analysis and tracking over time.

#### Alerts & Notifications:

- With built-in email and SMS notifications, the platform provides proactive alerts on cleanliness thresholds, oil degradation, or sensor readings that exceed set limits. This helps prevent equipment failure by allowing for immediate corrective action

#### Report Generation:

- The platform includes an easy-to-use report generation tool, enabling you to create detailed, customisable reports on oil cleanliness, particle counts, and root cause analysis. These reports can be exported in various formats for sharing and record-keeping.

#### Historical Data & Trend Analysis:

- Data logs allow users to store and review historical cleanliness data, enabling long-term trend analysis. This functionality supports predictive maintenance and helps improve overall equipment performance.

#### Integration & Connectivity:

- Each hire unit is equipped with dedicated 4G modems and required communication hardware, offering seamless connectivity. The platform can also integrate with existing thernet networks, providing additional flexibility for data transmission.

#### Security & Data Management:

- Our platform ensures data security and integrity with encrypted communications and secure user access controls. It supports multiple users with tiered access levels, ensuring the right stakeholders have visibility to critical data while maintaining data confidentiality.



Pg.17

LASPACII-P-M-W



Pg.17

PPC-PAD-PLUS



Pg.18

FS9V4



Pg.18

SMART MONITORING KIT



Pg.19

DIGITAL HYDRAULIC TESTER



Pg.19

CMU





### LASPACII-P-M-W



#### SENSOR

Twin-Laser

#### OPERATION TEMP

+5 °C to 80 °C

#### POWER SUPPLY

240 V AC

#### DATA

Internal (for approximately 600 tests)

#### COMPATIBLE WITH

Mineral and synthetic oil

#### VISCOSITY RANGE

1 to 400 cSt

#### PRESSURE

2 to 400 bar

#### PRODUCT DETAILS:

Hire Period:	Weekly
Weight:	13 kg
Dimensions (cm):	55.1L x 35.8W x 22.6H

### PPC-PAD-PLUS

#### SENSOR

2 CAN bus networks, each with 24 STAUFF CAN bus channels

#### OPERATION TEMP

+5 °C to 80 °C

#### POWER SUPPLY

240 V DC - Internal lithium battery

#### DATA

Internal (12 GB)

#### COMPATIBLE WITH

Mineral and synthetic oil

#### SAMPLE RATE

1 ms = 1000 measured value/s

#### SENSOR OPTIONS

Pressure Transducer

0 - 400 Bar

0 - 600 Bar



#### PRODUCT DETAILS:

Hire Period:	Weekly
Weight:	1.88 kg
Dimensions (cm):	28.2L x 19.5W x 8.5H



### FS9V4



#### SENSOR

Optical

#### OPERATION TEMP

-20° C to 70° C

#### POWER SUPPLY

220 V AC - Internal lithium battery

#### DATA

The sensors will hold 100,000 lines of data (138 days)

#### COMPATIBLE WITH

Diesel & oil (hydraulic, lubrication, mineral, synthetic)

#### VISCOSITY RANGE

0 to 2400 cSt

#### PRESSURE

Max inlet pressure of 150 Bar with High-Pressure device, otherwise built-in internal pump max inlet 2 Bar without HPD.

#### PRODUCT DETAILS:

Hire Period:	Weekly
Weight:	7.10 kg
Dimensions (cm):	39.8W x 31D x 17.2H

### SMART MONITORING KIT (PARTICLE COUNTER)

#### SENSOR

Optical

#### OPERATION TEMP

0°C to 80°C

#### POWER SUPPLY

24 VDC

#### DATA

Real time data

#### COMPATIBLE WITH

Mineral and synthetic oil

#### VISCOSITY RANGE

0 to 540 cSt

#### PRESSURE

(0-2 bar (Internal Gear Pump))

#### NOTES

Provides root cause analysis on particle types, oil degradation percentage, and trending.



#### PRODUCT DETAILS:

Hire Period:	Weekly
Weight:	6 kg
Dimensions (cm):	24.9L x 40W x 13.2H





### DIGITAL HYDRAULIC TESTER



**SENSOR**

Magnetic pickup

**OPERATION TEMP**

-10 to 50°C

**POWER SUPPLY**

9 VDC

**DATA**

Real time data

**COMPATIBLE WITH**

Mineral and synthetic oil

**VISCOSITY RANGE**

0 to 540 cSt

**PRESSURE**

420 bar

**FLOW METER**

10- 400L LPM

**ACCURACY**

1% margin of error at full flow

**PRODUCT DETAILS:**

Hire Period:	Weekly
Weight:	6 kg
Dimensions (cm):	24.9L x 40W x 13.2H

### CMU

**SENSOR**

Laser

**OPERATION TEMP**

-20°C to 80°C

**POWER SUPPLY**

3 Phase, 20a, 4 pin

**DATA**

Real time data

**COMPATIBLE WITH**

Mineral and synthetic oil

**VISCOSITY RANGE**

0 to 1000 cSt



**PRODUCT DETAILS:**

Hire Period:	Weekly
Weight:	80 kg
Dimensions (cm):	53.3L x 50.9W x 60H



**FOR MORE INFORMATION CONTACT:**

Head Office:  
11 Boulder Road, Malaga,  
Western Australia 6090  
Email: sales@mhs.com.au  
Website: www.mhs.com.au

Phone: (+61 8) 9249 2511  
ABN: 29 559 250 199

